



How To Create a Project

Part	Version	Revision	Date	Status
en	5.1.1183.81	001	2021-03-15	Released

Content

Introduction	2
Procedure	2
Create A New Project	2
Select Target Device Operating System	3
Name Project	4
Configure User and Password Management Settings	5
Insert Communication Drivers	6
Configure Default Screen Settings	7
Create Data Logger Templates	8
Create Alarm Templates	9
Configure Communication Driver Settings	10
Import PLC Tags	11
Disclaimer	13

Introduction

This document explains how to create a Combivis Studio HMI project using the “New Project Wizard”.

Procedure

Create A New Project

Click File -> New

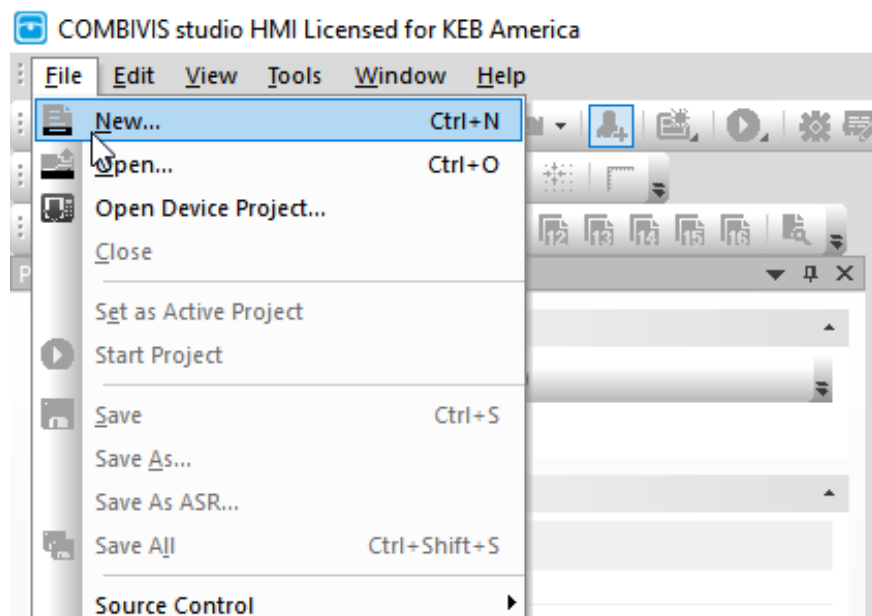


Fig. 1: Step 1

FAQ COMBIVIS Studio HMI

Select Target Device Operating System

Select the target device operating system and select Open.

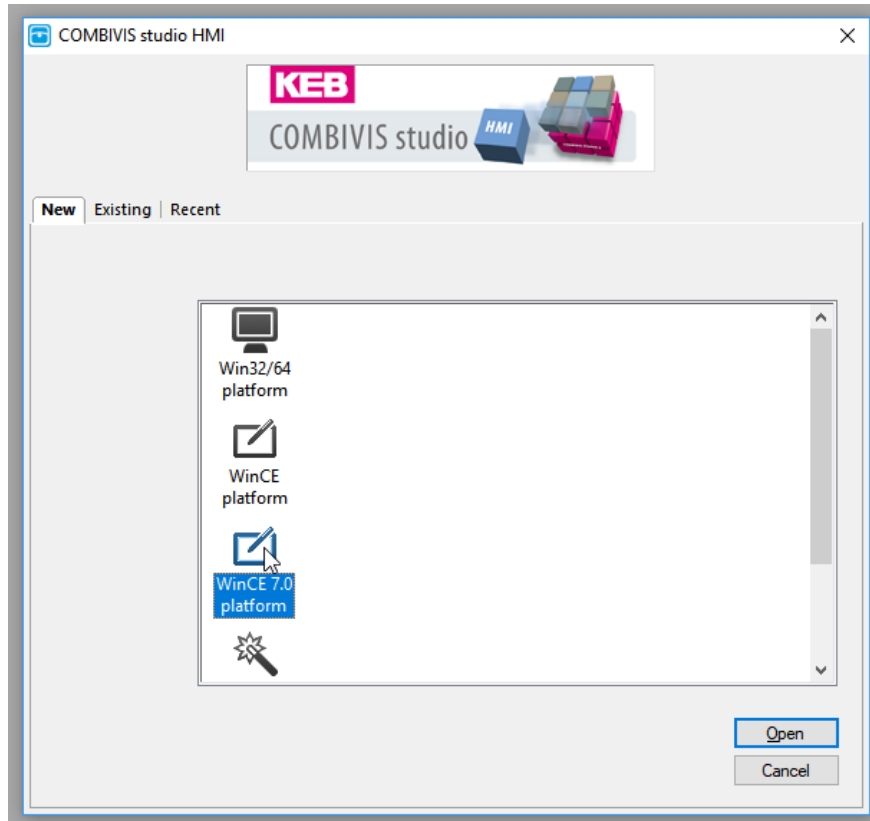


Fig. 2: Step 2

The table below shows the operating system for KEB devices.

Device	Operating System
C6 Router	WinCE 7.0
C6 HMI	WinCE 7.0
C6 HMI LC	WinCE 7.0
C6 Smart	WinCE 7.0
C6 S14	WinCE 7.0
C6 E22	Win 32/64
C6 PX	Win 32/64

FAQ COMBIVIS Studio HMI

Name Project

Create a name for the project and define a directory path to save the project. Lastly, select the HMI RTE on the target device. Select next after configuring the project name settings.

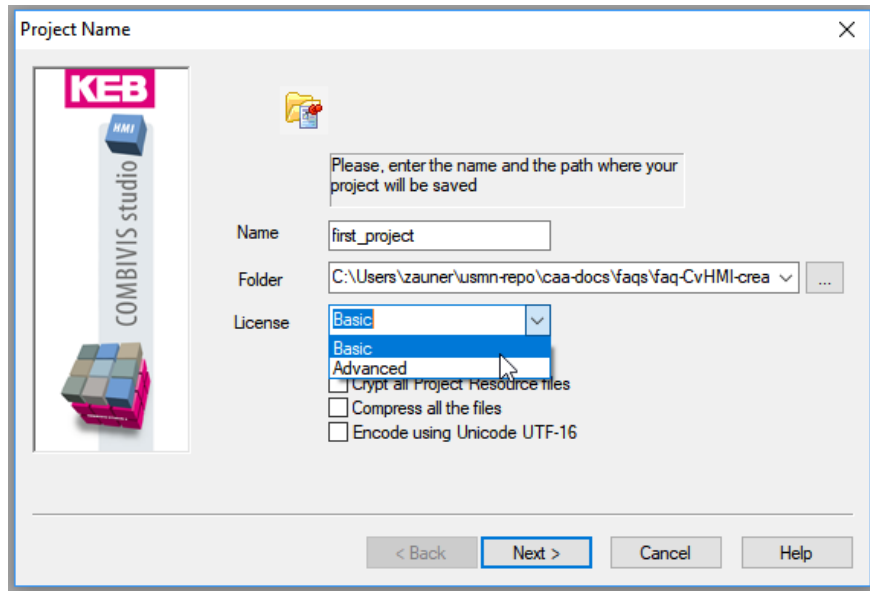


Fig. 3: Step 3

Configure User and Password Management Settings

This step will configure the User and Password Management settings. Configuration in this step is optional and settings can be enabled after project creation. Select next after configuring the User and Password management settings.

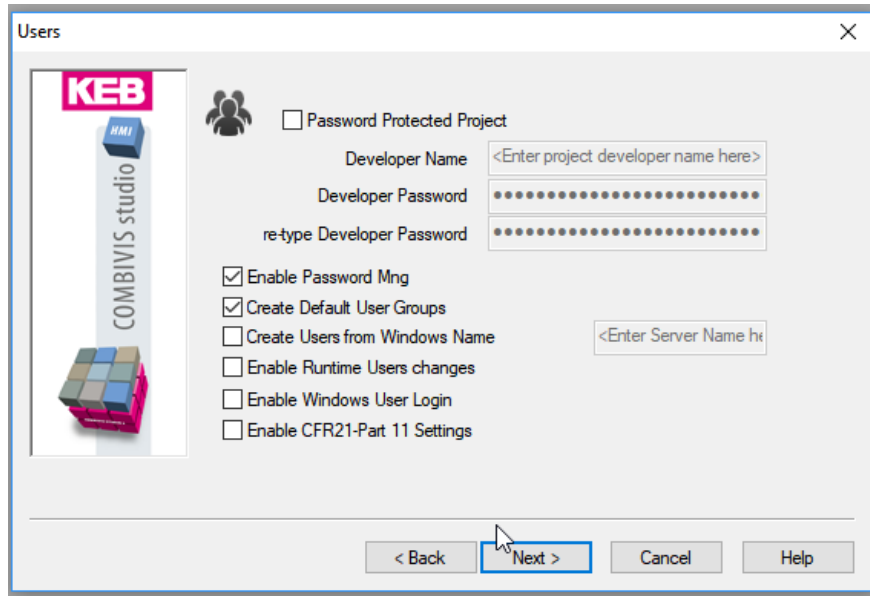


Fig. 4: Step 4

Insert Communication Drivers

This step will insert a communication driver into the project. This step is optional and communication drivers can be added after project creation. Select next after selecting the desired communication driver.

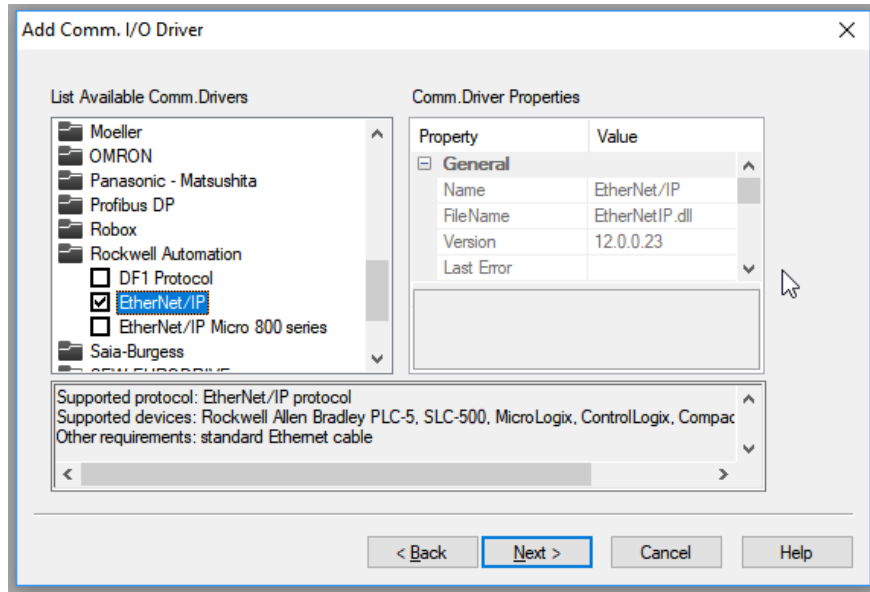


Fig. 5: Step 5

FAQ COMBIVIS Studio HMI

Configure Default Screen Settings

This step will define the default screen settings. This step is optional and default screen settings can be changed after project creation. Select next after configuring the default screen settings. The screen resolution of each KEB device can be found in the [Product Overview](#) section of the [Control and Automation Catalog](#) or the product manual of each device.

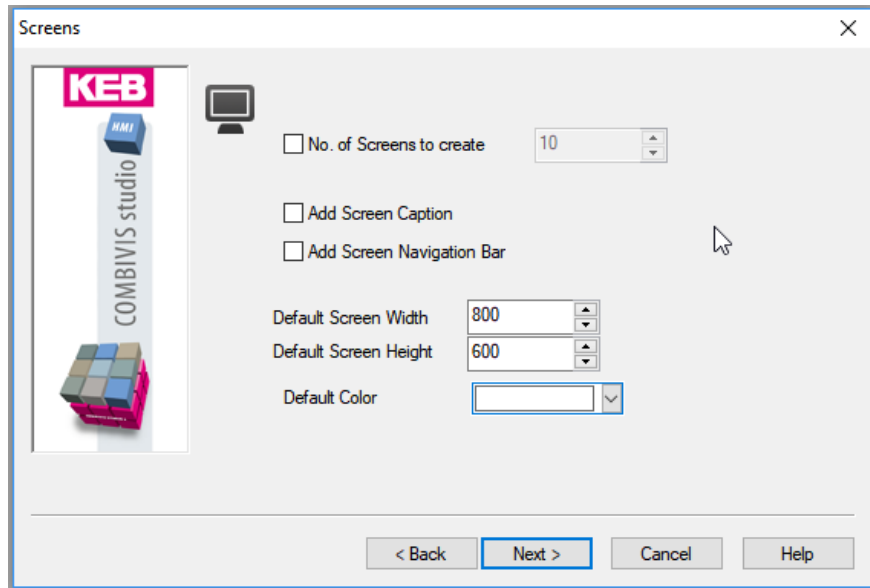


Fig. 6: Step 6

Create Data Logger Templates

This step will create data loggers templates. This step is optional and data loggers can be added after project creation. Select next after creating default data logger templates.

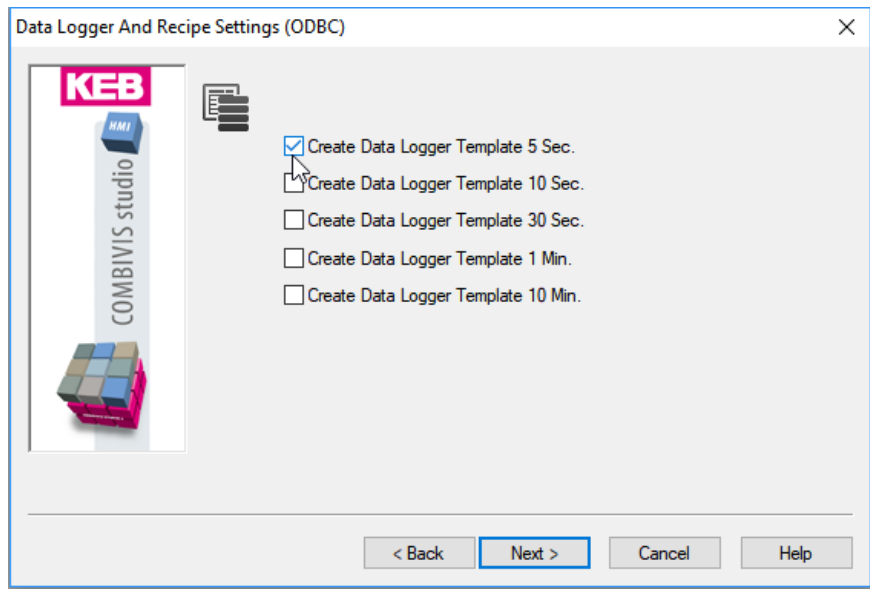


Fig. 7: Step 7

Create Alarm Templates

This step will create alarm templates. This step is optional and alarms can be added after project creation. Select next after creating alarm templates.

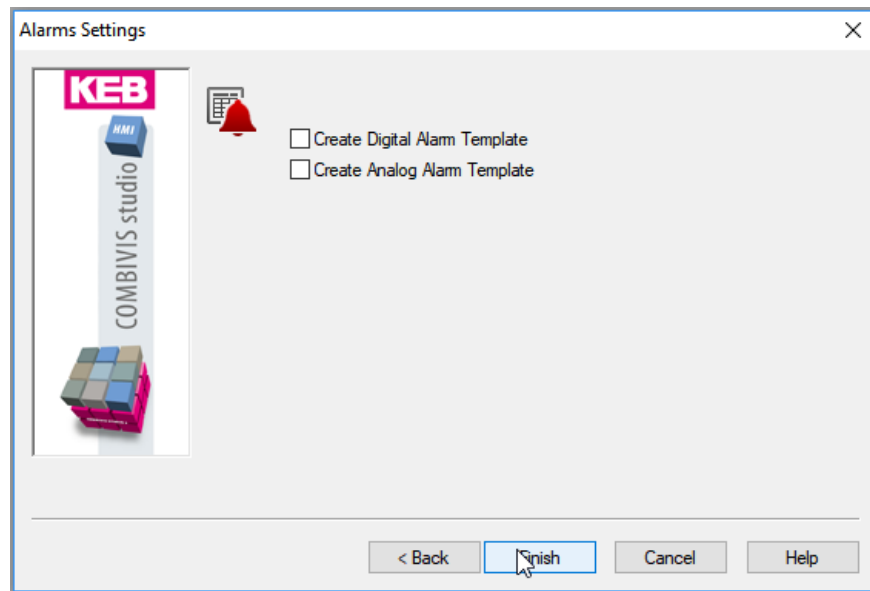


Fig. 8: Step 8

FAQ COMBIVIS Studio HMI

Configure Communication Driver Settings

This step will configure the communication driver settings. Select Add to add and configure a new PLC station in the communication driver. This step is optional and communication driver settings can be changed after project creation. Select OK after configuring the PLC station.

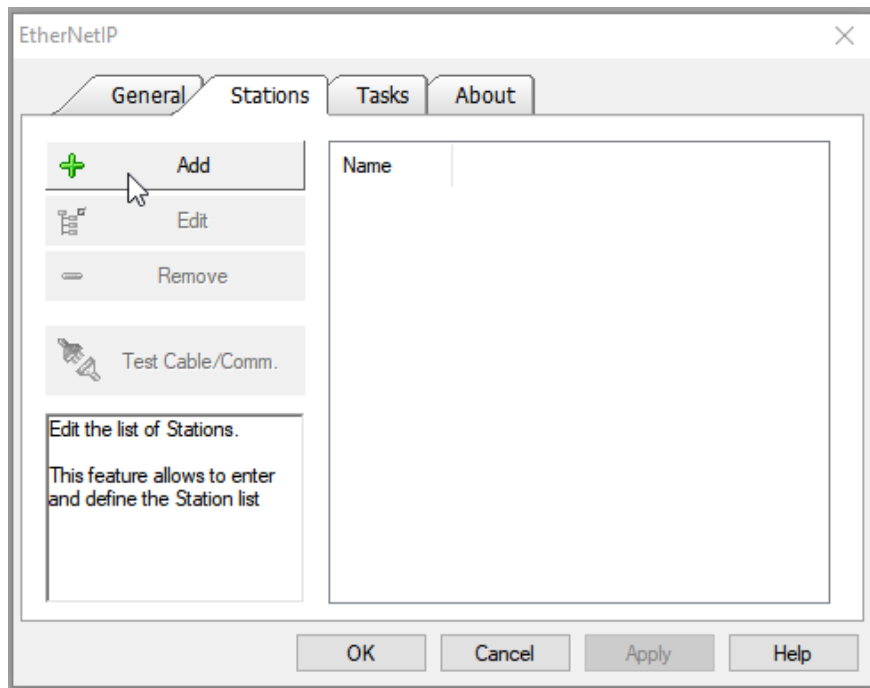


Fig. 9: Step 9

Import PLC Tags

This step will import PLC tags from a PLC project file, see the Help section of the communication driver for more information. This step is optional and tags can be imported after project creation.

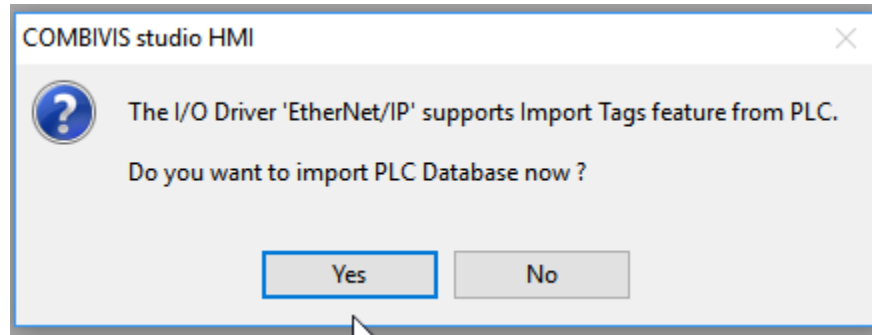


Fig. 10: Step 10

FAQ COMBIVIS Studio HMI

The new project is now created. The resources that were configured are found under the Resources.

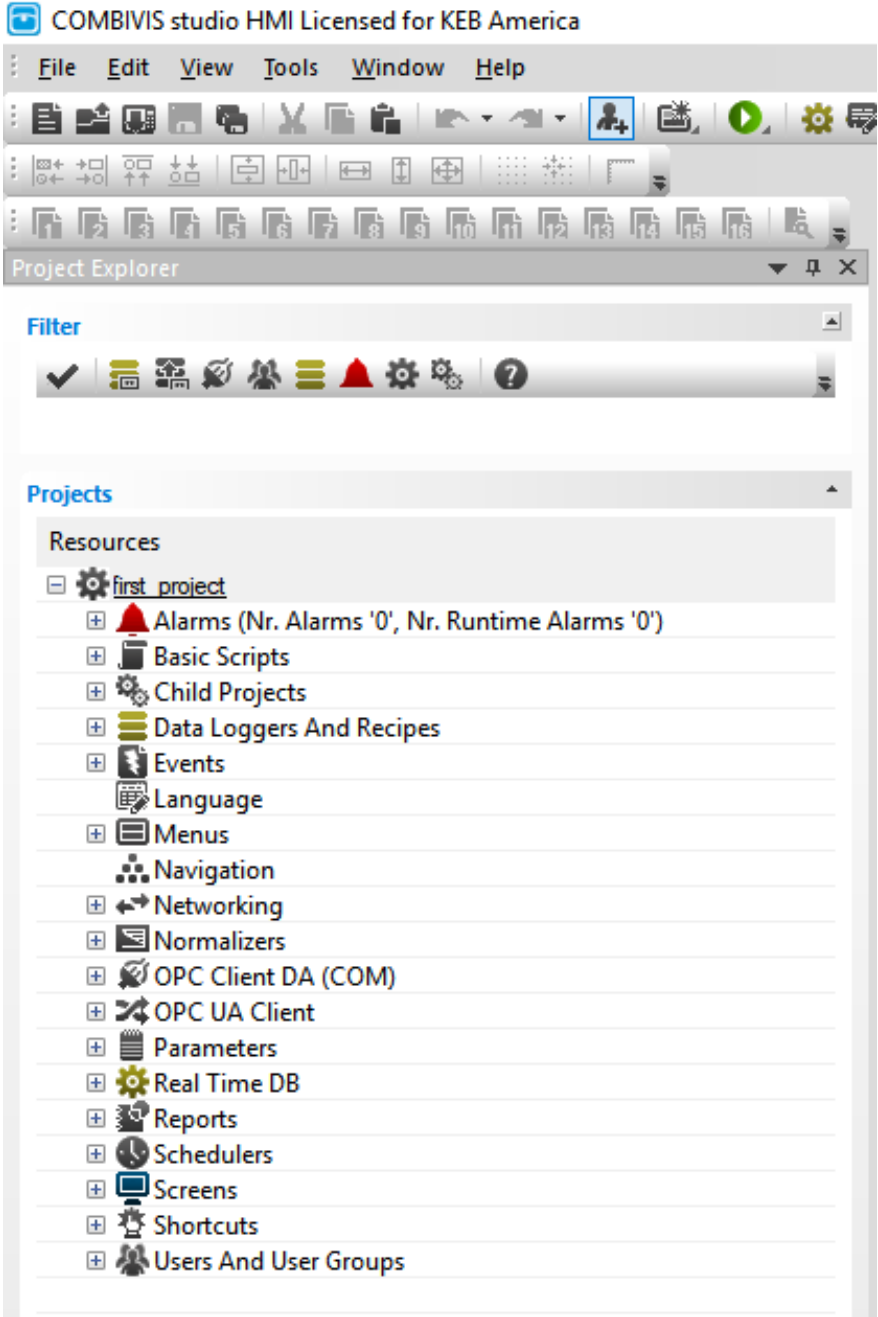


Fig. 11: Project creation complete

Disclaimer

KEB America, Inc. reserves the right to change/adapt specifications and technical data without prior notification. The safety and warning reference specified in this manual is not exhaustive. Although the manual and the information contained in it is made with care, KEB does not accept responsibility for misprint or other errors or resulting damages. The marks and product names are trademarks or registered trademarks of the respective title owners.

The information contained in the technical documentation, as well as any user-specific advice in verbal or in written form are made to the best of our knowledge and information about the application. However, they are considered for information only without responsibility. This also applies to any violation of industrial property rights of a third-party.

Inspection of our units in view of their suitability for the intended use must be done generally by the user. Inspections are particularly necessary, if changes are executed, which serve for the further development or adaptation of our products to the applications (hardware, software or download lists). Inspections must be repeated completely, even if only parts of hardware, software or download lists are modified.

Application and use of our units in the target products is outside of our control and therefore lies exclusively in the area of responsibility of the user.

Americas:

KEB America, Inc.
5100 Valley Industrial Blvd South
Shakopee, MN 55379, USA
(+1) 952-224-1400
info@kebamerica.com

Headquarters:

KEB Automation KG
Suedstrasse 38
D - 32683 Barntrup, Germany
(+49) 5263 401-0
info@keb.de