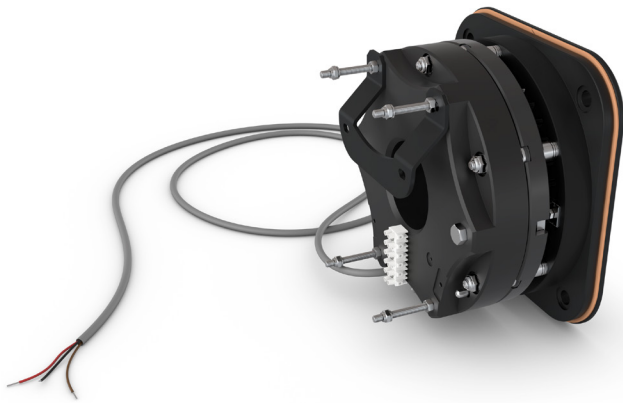


Type 1038M LOAD BRAKE

ELECTROMAGNETIC FAILSAFE SPRING-SET BRAKE



DESCRIPTION

This electrically released, spring-set (power-off) load brake by KEB is rated up to 3200Nm. It is configurable with different hub bore sizes and magnet voltages. It also includes manual release, microswitch, and enclosure options.

FUNCTIONAL FEATURES & BENEFITS

This low speed, multi-disc, failsafe spring-set load brake has a square 325mm design for tight width requirements in a four bolt mounting pattern.

DC release voltage coils: 24, 105, 170, 205 or 270 VDC

Magnet Coil DC Power: 150W

Lead wire: AWG 18 3 wire SOOW cable 120" long.

High torque in a small lightweight 135 lb. package.

Four torque values can be ordered: 1600, 2133, 2667, 3200Nm

Noise reduced actuation of < 65dB at 1 meter.

Bolt release is standard.

Dust protection ring (IP44) is standard

APPLICATIONS

TYPICAL INSTALLATIONS & RECOMMENDED USE

This load brake has many applications including:

- Hoists
- Cranes
- Lifts

OPTIONS

Hand release:

- Dead man style, with 400mm handle. (requires a 12° tilt back)

Micro-switch:

- Positive-break design, 3 wire, NO or NC.
- One or two switches can be mounted.
- Terminal strip.

Enclosure:

- 20ga. Galvaneal steel IP54 protection with four 1.04" dia. wire entrance holes.

Note Enclosure cannot fit over the Hand Release option.

RATINGS

Static Torque: rated values = 1600, 2133, 2667, or 3200Nm
(Note: Max torque can = 1.6 * rated torque)

Speeds up to 200 RPM

Power: 150W

DC Voltage [Amps]: 24 [6.25A], 105 [1.44A], 170 [0.88A],
205 [0.74A], 270 [0.56A]

Enclosure: IP54

ENVIRONMENTAL OPERATING CONDITIONS

Ambient temp: 0 to +40° C

Humidity: non-condensing (could freeze and not rotate)

STD. HUB BORES/KEYS [TORQUE LIMIT]

METRIC	INCHES
50/14[1600Nm]	1.875/0.500[2133Nm]
55/16[2133Nm]	2.000/0.500[2133Nm]
60/18[2133Nm]	2.125/0.500[2667Nm]
65/18[2667Nm]	2.250/0.500[2667Nm]
70/20	2.375/0.625
75/20	2.500/0.625
80/22	2.625/0.625
85/22	2.750/0.625
90/25	2.875/0.750
	3.000/0.750
	3.125/0.750
	3.250/0.750

OVERALL DIMENSIONS

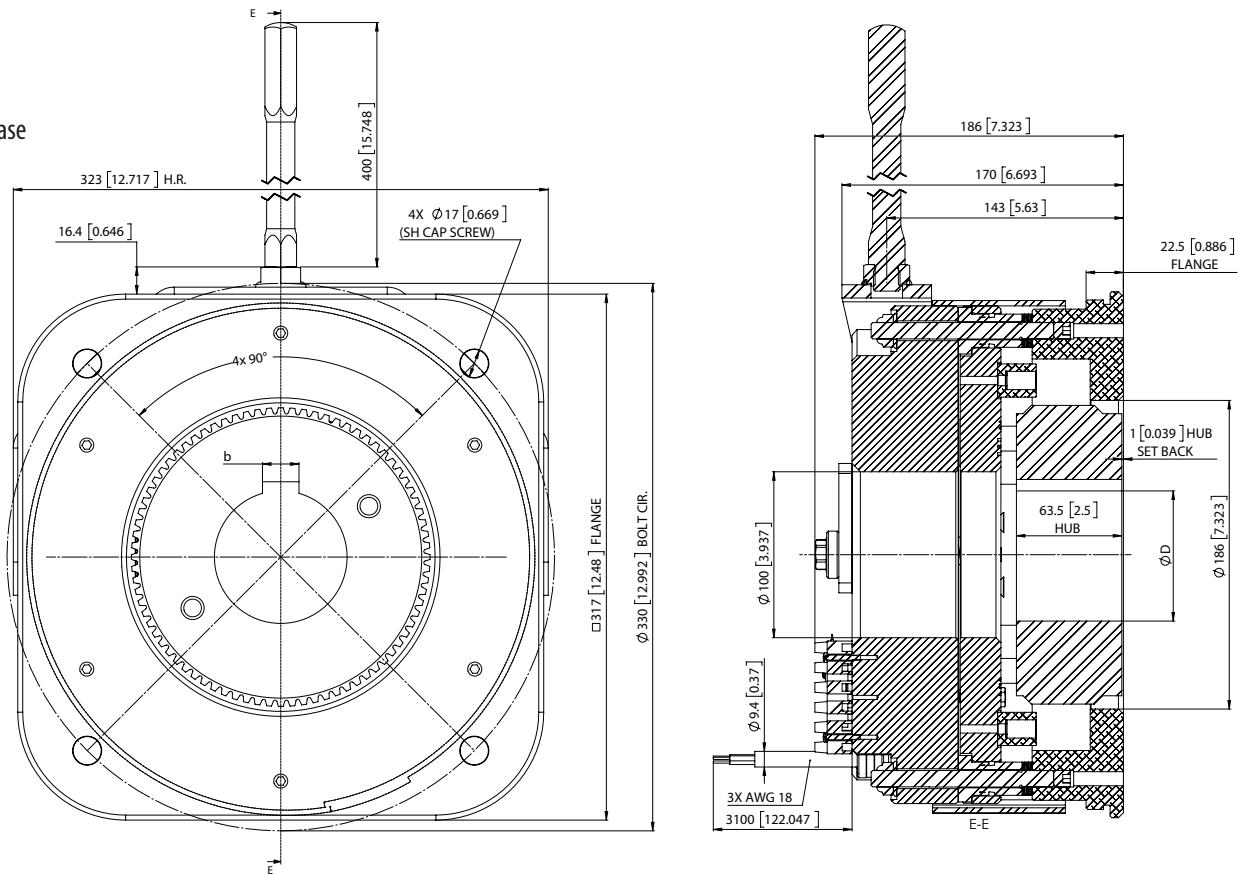
Flange = 325mm square
 Bolt mounting pattern on a 330mm B.C. = 4x 16mm [5/8"]
 190mm long assy. (235mm with enclosure)
 Mounting length requirements = 260mm free space (400mm with enclosure)
 Inside Dimension = 100mm through the brake
 Hub length = 63.5mm
 Hub bore = 50 to 90mm [1.875" to 3.25"]
 Weight = 135 lbs.

MORE INFORMATION

For more information, speak with a KEB engineer today at 952.224.1400

KEY

mm [inches]
 b = shaft keyway
 E = manual brake release
 D = Hub Bore



Automation with Drive

KEB America, Inc.
 5100 Valley Industrial Blvd., S
 Shakopee, MN 55379

Tel: (952) 224-1400
 Fax: (952) 224-1499

info@kebamerica.com
 kebamerica.com